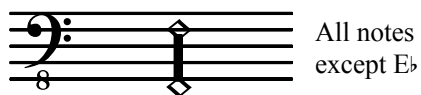


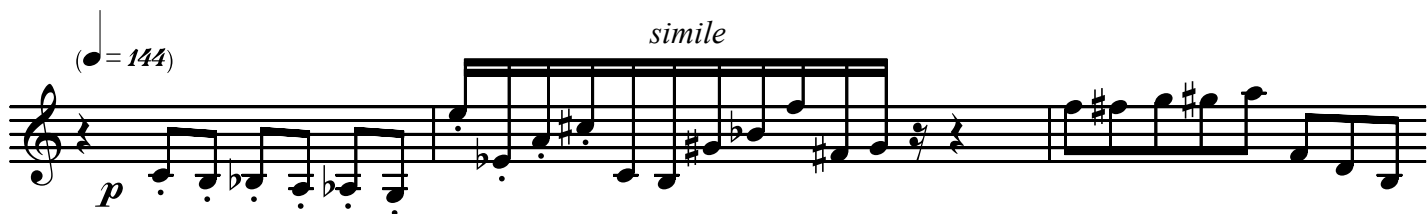
10 CROCUS FOR PIANO SOLO  
Crocus IV - "La forêt de Soignes"  
Baudouin de Jaer 2006

Two pieces of rubber between the strings of the A-Bb-B lowest keys.

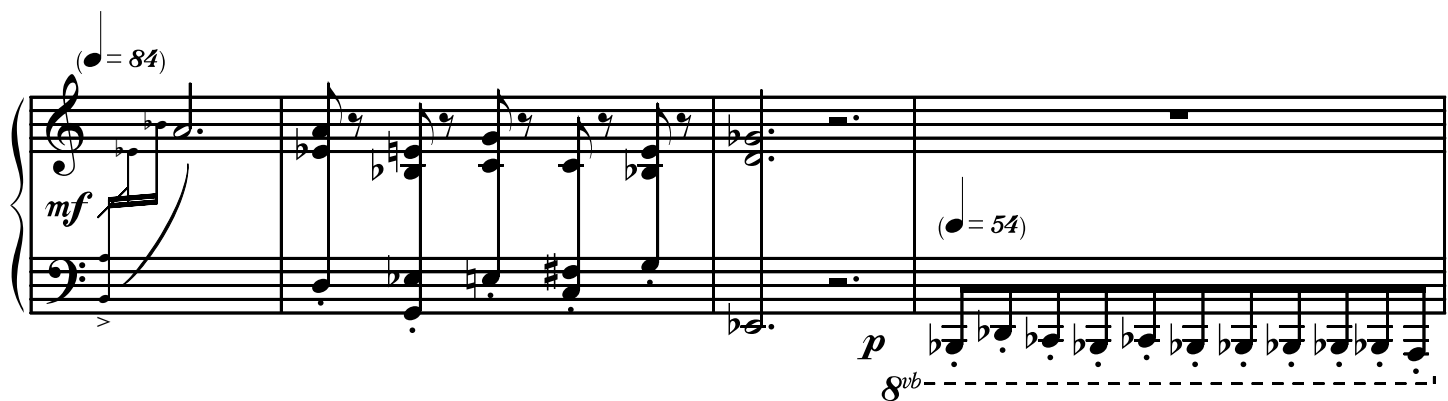

Sustained 3rd Pedal



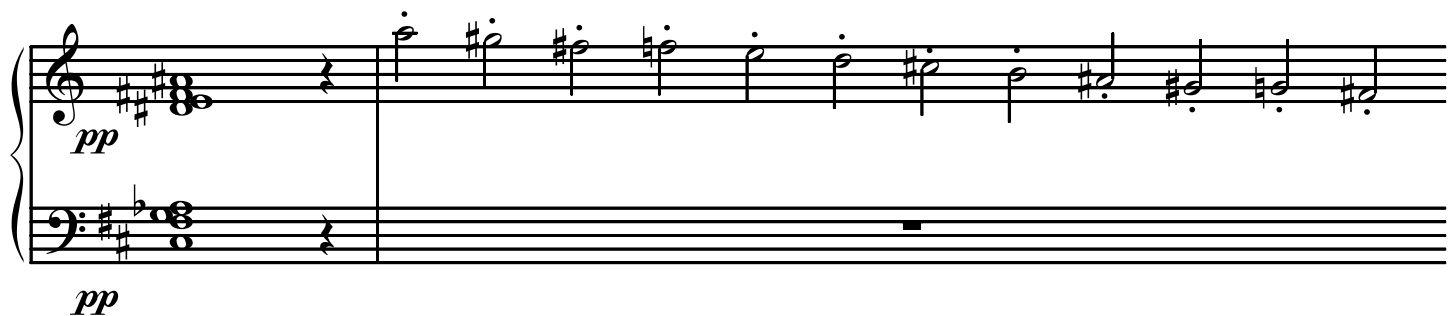
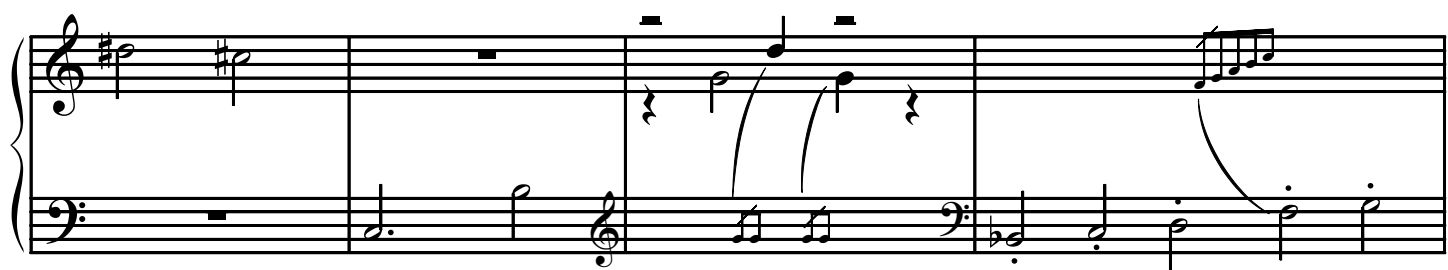
All notes except Eb



(♩ = 144) *simile*  
*p*



(♩ = 84) *mf*  
(♩ = 54) *p*  
8vb



*pp*  
*pp*

A musical staff with a treble clef on the top line and a bass clef on the bottom line. The treble clef line contains a melodic line starting with a quarter note G4, followed by a quarter note A4, a quarter note B4, and a quarter note C5. A fermata is placed over the C5 note. The bass clef line contains a bass line starting with a quarter note G2, followed by a quarter note F2, a quarter note E2, and a quarter note D2. A fermata is placed over the D2 note.

♩ = 54

A piano score with a treble clef on the top line and a bass clef on the bottom line. The treble clef line contains a complex melodic line with many sixteenth notes and a fermata. The bass clef line contains a bass line with a fermata. The dynamic marking *f* is present in both staves.

Stacc.

A musical staff with a treble clef. The melodic line consists of a series of notes with staccato markings (short horizontal lines above the notes) and a fermata. The dynamic marking *pp* is present.

A musical staff with a treble clef. The melodic line consists of a series of notes with a fermata. The bass clef line contains a bass line with a fermata. The dynamic marking *p* is present.

A musical staff with a treble clef. The melodic line consists of a series of notes with a fermata. The bass clef line contains a bass line with a fermata.

A musical staff with a treble clef. The melodic line consists of a series of notes with a fermata. The bass clef line contains a bass line with a fermata.

♩ = ♩      ♩ = ♩      ♩ = ♩

*f*      *pp*      *f*

8<sup>va</sup>

♩ = 84

*p*      *f*      *p*

10:8

*f*      *mf*      *tr*      *tr*      *tr*      *tr*

*f* >      *p*      *pp*      *tr*      *tr*      *tr*      *ff*

Sustained 3rd Pedal

♩ = 48

*mp*



(♩ = 46)

*mf*

(♩ = 48)



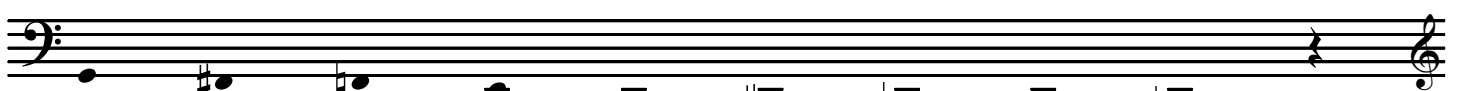
*mp*

(♩ = 48)



x 25

*pp*



(♩ = 40)

*f*

(♩ = 36)

*ppp*

(♩ = 126)

*ppp*

(♩ = 120)

*fff*

Sustained 3rd Pedal

(♩ = 144)

*mf-f*

A musical staff with a bass clef on the left and a treble clef on the right. The bass clef part contains a melodic line with slurs and a fermata. The treble clef part contains a complex rhythmic pattern with many sixteenth notes and slurs.

A musical staff with a treble clef. It contains a complex rhythmic pattern consisting of many sixteenth notes, with some slurs and a fermata at the end.

A musical staff with a treble clef. It contains a complex rhythmic pattern with slurs and dynamic markings. The markings include *pp*, *5:4*, *7:4*, and *9:4*.

A musical staff with a treble clef on top and a bass clef on the bottom. It contains complex rhythmic patterns with slurs and dynamic markings. The markings include *f*, *p*, *5:4*, and *7:4*.

A musical staff with a treble clef. It contains a melodic line with slurs and a dynamic marking of *p*.

A musical staff with a treble clef. It contains a complex rhythmic pattern with slurs and a dynamic marking of *p*.

• = 132 • = 144

• = 132

• = 144

• = 132 • = 144

*f*

*p* *mf* *p*

*p* *mp* *p*

*f* *f*

5 5

3 3

*f* *mp* *pp* *f* *f* Forearm

5 13 16

(slide) *f* 6 5 7 Forearm

slide

*f*



Sustained 3rd Pedal

All notes except Eb

Musical staff with treble clef, key signature of one sharp (F#), and a sequence of notes. A dynamic marking *mp* is present, and a *poco* marking is under a group of notes. A measure number (15) is written above the staff.

Piano accompaniment for the first system, showing bass and treble clefs. Dynamic markings *p* and *p+* are used throughout the system.