

2015-2016

«Ce qui s'écoule »

Pour piano préparé
et saxophone soprano

Oscar Muñoz

[Narcisse], 2001

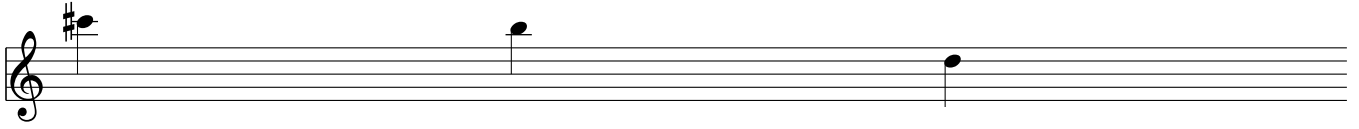


Préparation du piano

Tube de métal fin entre la corde
2 et 3 près du marteau

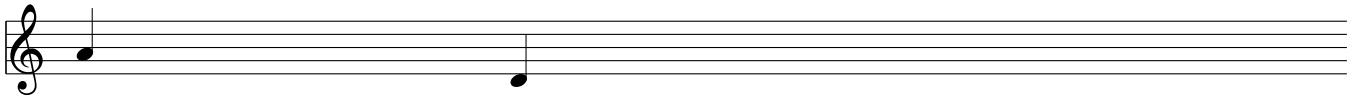
3 élastiques
près du chevalet

3 élastiques près du marteau
+ 1 visse entre corde 2 et 3 près du chevalet



Cellophane près du chevalet

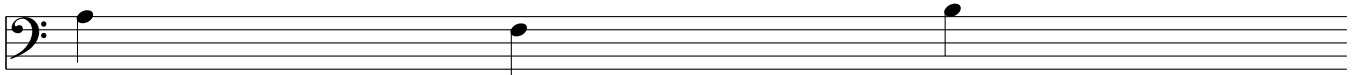
gomme/ rondelle près du chevalet



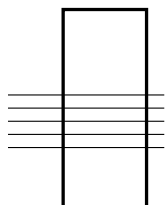
Gomme a 1/3 de la corde

gomme a 1/3 de la corde

Clou avec bout du clou qui touche la caisse
de résonance aux 2/3 de la corde/ gomme
+ 3 élastiques près du chevalet



Explications pour le saxophone soprano



Cellule à jouer jusqu'aux indications de silence ou d'une nouvelle cellule



Crescendo allant du silence --> au souffle --> au son



Decrescendo allant du son --> au souffle --> au silence

Flatt.

Flatterzung

Vib. 1

Vibrato de hauteurs et d'intensité serré et rapide

Vib. 2

Vib. 3

Vib. 4

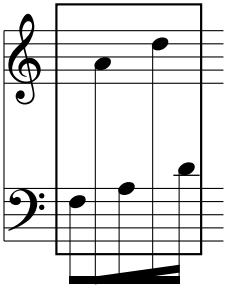
Vib. 5

Vib. 6

Vib. 7

Vibrato de hauteurs et d'intensité large et lent

Explications pour le piano

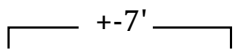


Cellule de notes à répéter jusqu'à la cellule suivante.
La main droite et la main gauche s'alternent sans cesse.
Chaque main tourne en boucle son motif.
L'indication rythmique concerne toute la durée de la cellule.



crescendo allant du jeu dans le double échappement --> au son

Explications pour le piano et le saxophone soprano



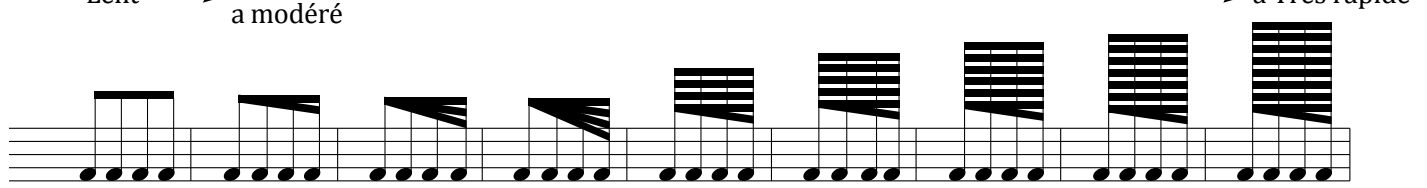
Durée approximative de la section encadrée par ce signe



Point de repère entre les deux instruments

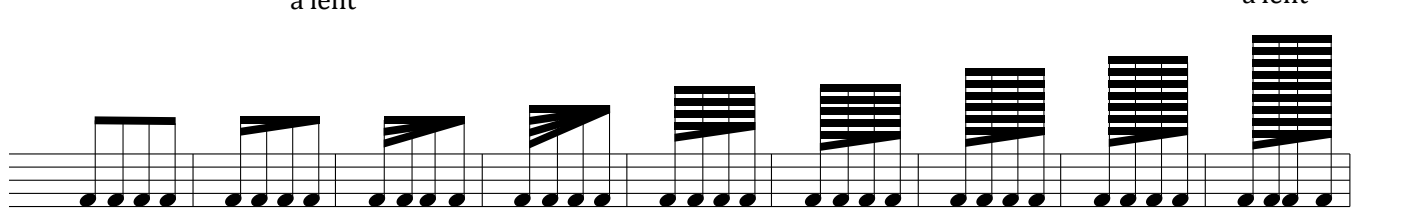
Notion de tempo: libre

Lent → De lent a modéré → De lent à Très rapide



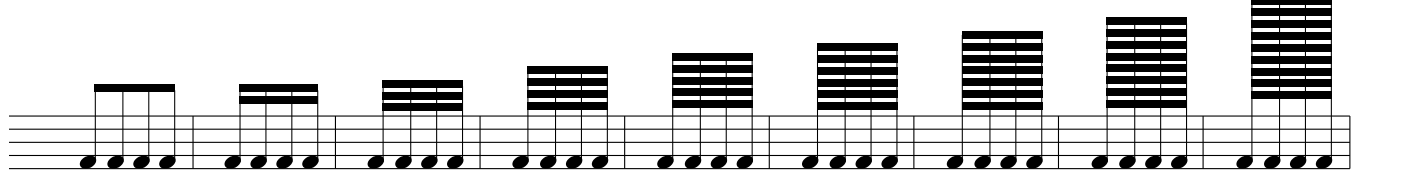
A musical staff with a treble clef. Above the staff, an arrow points from left to right, labeled "Lent" at the start, "De lent a modéré" in the middle, and "De lent à Très rapide" at the end. Below the staff, there are nine groups of notes. Each group consists of a series of notes on a single line, with a horizontal bar above them. The number of notes in each group increases from left to right, and the duration of each group also increases, illustrating a tempo change from slow to very fast.

Lent → De modéré à lent → De très rapide à lent



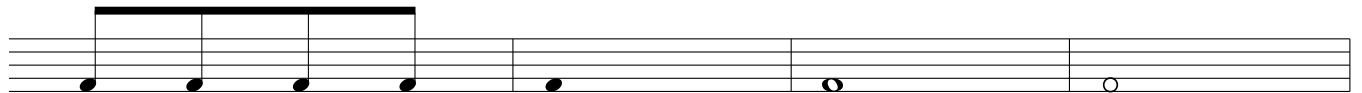
A musical staff with a treble clef. Above the staff, an arrow points from left to right, labeled "Lent" at the start, "De modéré à lent" in the middle, and "De très rapide à lent" at the end. Below the staff, there are nine groups of notes. The first four groups have a decreasing number of notes and increasing duration, while the last five groups have an increasing number of notes and decreasing duration, illustrating a tempo change from slow to moderate to fast and back to slow.

Lent → Très rapide



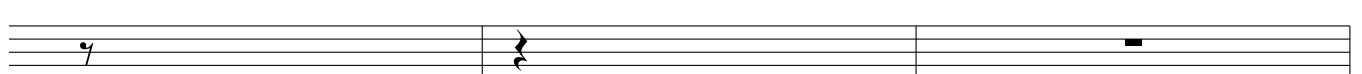
A musical staff with a treble clef. Above the staff, an arrow points from left to right, labeled "Lent" at the start and "Très rapide" at the end. Below the staff, there are nine groups of notes. Each group consists of a series of notes on a single line, with a horizontal bar above them. The number of notes in each group increases from left to right, and the duration of each group also increases, illustrating a tempo change from slow to very fast.

Lent → Extrêmement lent



A musical staff with a treble clef. Above the staff, an arrow points from left to right, labeled "Lent" at the start and "Extrêmement lent" at the end. Below the staff, there are four notes on a single line. The first note is a quarter note, the second is a half note, the third is a whole note, and the fourth is a whole note with a fermata above it, illustrating a tempo change from slow to extremely slow.

Court → Long



A musical staff with a treble clef. Above the staff, an arrow points from left to right, labeled "Court" at the start and "Long" at the end. Below the staff, there are three measures. The first measure contains a quarter note, the second measure contains a half note with a fermata above it, and the third measure contains a whole note with a fermata above it, illustrating a tempo change from short to long.

Sax. Sop. + - 7' + - 11'
 Si b
 Piano

(n°4) (n°65)
p *pp* *ppp*
mf *f*
 Red.

+ - 8' + - 6'

(n°55)
mp
mp résonnance
 1/2 Red.

+ - 11' + - 16'

(n°64) (n°75/n°129 du Weiss)
mp *mf* *mp*
p *mf*
pp *mp*
 Red.

+ - 13'
+ - 4'

(n°77)

mp *p*

f *mf*

résonnance

1/2 *And.*

+ - 6'
+ - 10'

(n°55)

Flatt.

mf *mp*

mf *mf* *mf* *mp* *mf*

And.

+ - 9'
+ - 7'

(n°59)

(n°61)

mp *p* *p*

f *mp* *p* *mp*

+ - 10' + - 7' + - 11'

Flatt. (n°65)

mf *mp* *p*

p *mf* *mp* *mf* *mp* *mf* *p*

+ - 2' + - 12' + - 10'

(n°55) Flatt.

mf *mp* *mf*

p *mf* *mp* *mf* *mp*

résonnance

1/2 *ped.* *ped.*

+ - 8' + - 13'

(n°65) Flatt.

mp *mf*

mf *f*

+- 10' +- 12'

(n°68) (n°13) Flatt.

mf *mf* *mf*

mf *f* *mf*

+- 10' +- 15'

(n°59) (n°9) Flatt.

p *f* *mf* *mp*

résonnance *f* *mf* *mp* résonnance

1/2 $\frac{3}{4}$

+- 12' +- 6'

(n°59) (n°77)

pp *mf* *mp*

+- 9' | +- 7'

(n°55) | (n°85 de Weiss)

mp | *mp*

+- 10' | +- 8' | +- 14'

(n°41) | Flatt. | (n°68) | (n°43)

mf | *mp* | *mf*

+- 9'

(n°67)

mf | *mp*

+- 8' +- 10'

(n°11) Flatt.

f *ff*

mf

+- 10' +- 3' +- 12'

(n°46) Flatt. (n°36)

ff *f* *ff*

ff *f*

Vib 1 Vib 2

ff *f* *ff*

ff *f* *ff*

+ - 15'

Vib 3

ff *f*

mf *f* *mp* *mf*

+ - 10'

Vib 4

Vib 5

mf

p *mp* *pp* *p*

+ - 20'

Vib 6

mp *p*

pp *p* *ritardando...*

Vib 7

Musical score for Vib 7. The score consists of three staves. The top staff is a single treble clef staff with a whole note and a dynamic marking of *pp*. The middle staff is a grand staff (treble and bass clefs) with a key signature of one sharp (F#) and a whole note chord. The bottom staff is a single bass clef staff with a whole note.

A single musical staff with a whole note.

An empty musical staff.